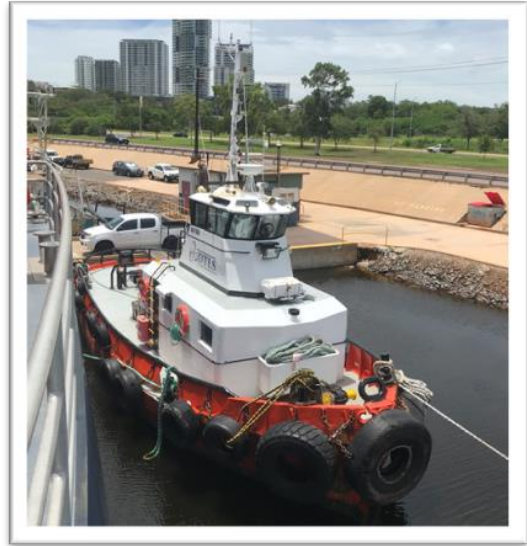


DARWIN TUG & LINE SERVICES

44 GRAFFIN CRESCENT WINNELLIE
NT 0820
P.O. BOX 163, DARWIN NT 0800
MOBILE: 0417 886 048
EMAIL: info@dtls.com.au



TOTAL SPIRIT

TWIN SCREW TUGBOAT

MACHINERY AND EQUIPMENT

Main Engines	2 x CAT D343 261kW ea.
Propulsion:	2 Fixed Pitch Propellers
Kort Nozzle:	Yes
Gear Box:	Twindisc 32315 3:1
Generator	1 x Isuzu 9Kva
Bow Thruster	N/A

PERFORMANCE

Bollard Pull	10.4T
Max Speed:	10 Knots
Operational Speed	8.0 Knots

PRINCIPAL PARTICULAR

Survey	USL 2B
Length overall	17.06 metre
Breadth	5.80 metre
Draft	3.0 metre
Gross Tonnage	62T
Clear Deck Space	25m ²
Accommodation	4
Fuel capacity	9.0m ³
No passengers	10
Construction	Steel

